

Photoluminescent markings of specified features in escape routes may be used to meet Clause F6 of the New Zealand Building Code, "Visibility in Escape Routes".



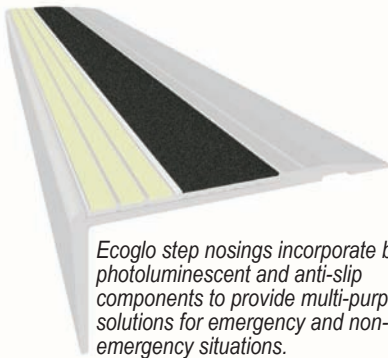
Emergency Lighting Solution

The New Zealand Building Code for emergency lighting, Clause F6 'Visibility in Escape Routes', now states that specified features must be made 'reasonably visible' from 10 metres. This is a significant change to the previous wording that stated buildings must be provided with 'adequate lighting' in escape routes. This change allows photoluminescent material that meets the visibility test to be used to meet F6. It is achieved by marking specific escape path features such as stair edges, hazards and handrails.

For the past 10 years Christchurch based company, Ecoglo, have been developing and manufacturing photoluminescent (PL) escape path systems which have been increasing safety in buildings, large and small, throughout the world. The products have undergone independent testing by an accredited laboratory to prove visibility from 10 metres.

Ecoglo products can be used as standalone systems for Risk Group B and C buildings which require 90 and 30 minutes of visibility, respectively. Risk group A buildings (eg prisons), which must remain visible until the restoration of the main lighting system, could use Ecoglo products to enhance their emergency system, especially as PL is instantly visible and failsafe.

Occupants of New York's World Trade Centre struggled to exit in darkness during the bombing in 1993. As a result the



Ecoglo step nosings incorporate both photoluminescent and anti-slip components to provide multi-purpose solutions for emergency and non-emergency situations.

Centre had PL markings installed into the stairwell and this significantly improved the speed and ease of egress during the 9/11 attack. A Task Force into safety, following this attack, resulted in the passing of legislation requiring all buildings, old and new, over 7 stories high, to have PL markings in stairwells. The International Code Council which applies in 50 other states has also passed legislation requiring PL markings in new buildings over 75ft high.

Not only are PL markings able to be used to meet F6 they also have distinct advantages over traditional emergency

Ecoglo Strengths and Benefits

ECOGLO STRENGTHS	DELIVER REAL BENEFITS
Meets code requirements	NZBC D1 Access Routes NZBC F6 Visibility in Escape Routes
High quality photoluminescence	Visible for hours in dark conditions
Heat bonded to aluminium	Hardwearing, no repainting or maintenance
Step edge contrast	Reduces falls in light or dark conditions
Increases safety	Aids egress in both emergency and non-emergency situations
Works in smoke conditions	Aids egress in fire emergencies
Uses natural or artificial light	Decreases electricity usage and increases sustainability
UV resistance	Can be installed inside or out
Internationally accredited testing	Use with confidence
New Zealand made	Work directly with the manufacturer
Proven results	Many installations throughout NZ and the world.

systems. Traditional lighting systems are costly to install and maintain, can have problems with partial and total failure, there can be issues with shadows from evacuees obstructing the view of the stairs and they have operating time constraints (eg battery runs out or generator runs out of fuel).

Photoluminescent escape path systems can eliminate these disadvantages. An additional benefit of PL systems is they are installed low to the ground which makes them easy to follow in smoke filled rooms. The solution is also sustainable as either natural light or the existing artificial light provides the charging source.

Ecoglo have advanced the technology to create products that are significantly more durable than the tape or paint options of other manufacturers. In these days of throwaway quality Ecoglo were determined to create a product that would last. Engineer, Mark Watson, developed a unique automated process which applies and then bakes in anti-slip and PL powders. The 180° heat applied, integrally bonds the powder

to the aluminium, meaning thousands of people can walk on Ecoglo products thousands of times with no wear and tear.

Building owners are very aware how often electrical lighting goes out and battery back-up lighting is either too slow to start, it fails completely or it does not operate for the duration of the blackout. Two examples of this are when the backup generator at Parliament failed leaving Ministers in the dark, and when the backup generator in Southland Hospital failed to kick in during a power cut (critical equipment, fortunately, had its own power supply). Ecoglo products are failsafe as they are continually absorbing the light in the environment. When the lights go out they glow brightly for many hours giving people confidence in exiting, even in emergency situations.

Some steps are just too hard to see, whether it be day or night. Prime Minister John Key's fall in January, resulting in a broken arm, was largely due to the poor visibility of the step. With Ecoglo you can clearly see the step whatever the light conditions as the combination of

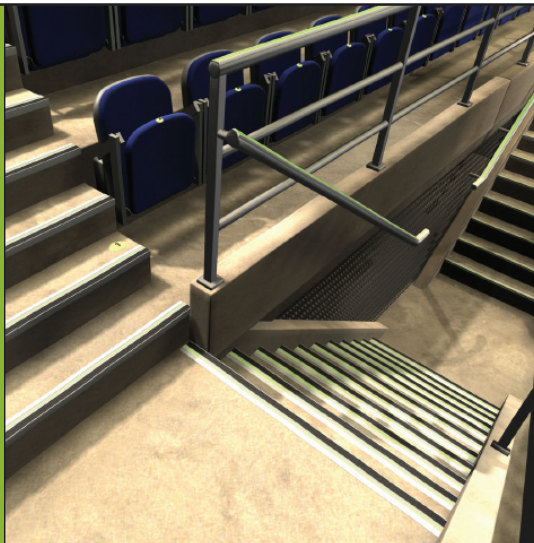


Ecoglo can be installed indoors or outdoors onto any surface eg carpet, linoleum, concrete, checker plate, wood or tile with glue and fixers. This installation is the F4171 product onto carpet.

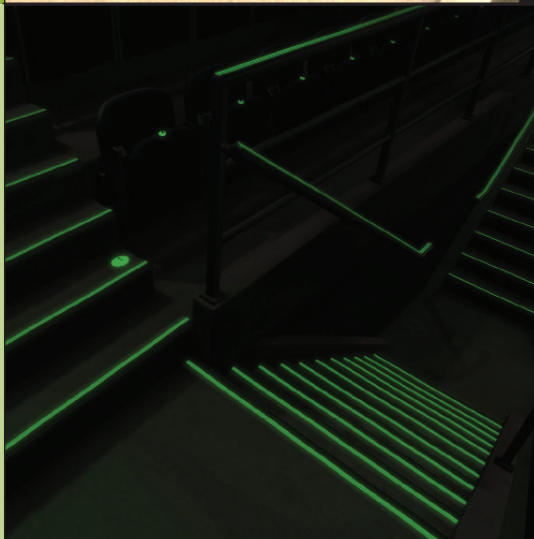
photoluminescence and the anti-slip mat creates excellent step edge contrast.

If you would like to receive a copy of the full F6 Photoluminescent Solution document please email info@ecoglo.com with F6 in the subject line.

Now you see them



Now you still see them



Can be used to meet F6 Emergency Lighting Requirements



Ecoglo has developed advanced production techniques for photoluminescent path marking systems. Our enhanced technology results in superior luminosity to meet F6 and high durability to withstand large amounts of foot traffic.

New Zealand Installations: • AMI Stadium • Christchurch Town Hall • Otago School of Medicine • Vector Arena • Massey University • Genesis Energy • Auckland council carparks • Palmerston North Courthouse • Hampden School • Canterbury Softball Park • Millenium Hotel • Gloucester Towers • Scales House • Te Papa • Britomart

Product range: • Step edging • Step nosing • Signage • Handrail Markers

ecoglo | VISIBLY BETTER

www.ecoglo.co.nz

Tel: 0800 232 6456 or info@ecoglo.com