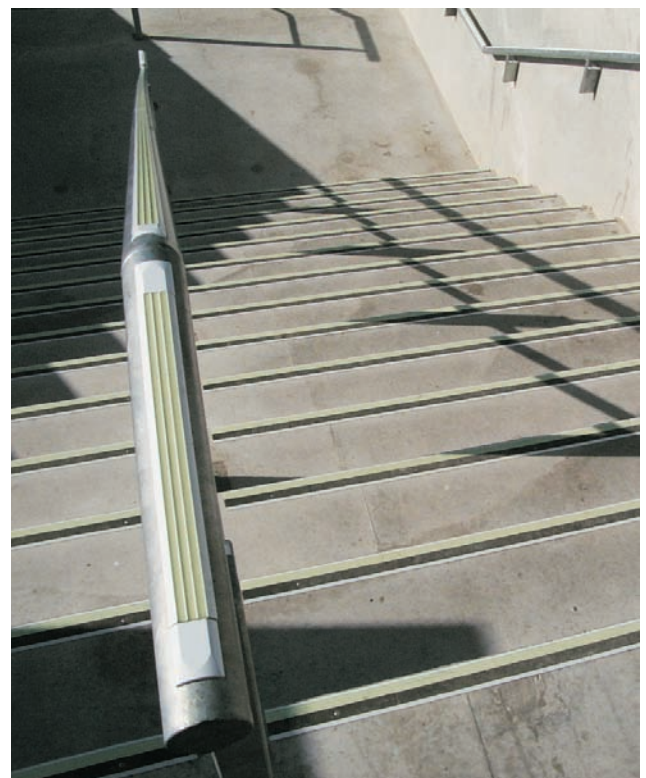


# New Zealand owned and operated, Ecoglo, lights the path for tens of thousands of spectators at Christchurch's AMI (formerly Jade) Stadium



The issue of emergency lighting was a serious consideration for consultants, Holmes Fire and Safety during the stadium's redevelopment. Ecoglo's photoluminescent system reduced costs for the stadium and provided the utmost level of safety for spectators when the lights went out.

The lower expense and low maintenance of the Ecoglo solution were the key features behind Holmes Fire and Safety's decision to install the system. Wiring emergency electrical lighting over large distances would have meant a substantial cost for the stadium, with the added cost of regular checks to ensure each light was working. Ecoglo, in contrast, requires no ongoing maintenance. Dean McKenzie, CEO of Jade Stadium at the time of the redevelopment said, "the Ecoglo installation has worked extremely well for Jade Stadium. My experience in running a number of venues with large crowd facilities leads me to state that the photoluminescent wayfinding system installed by Ecoglo





is a world class solution to a problem that most venues of this type face.”

Ecoglo not only emits a green light but it is also an environmentally green product. It is non toxic and non radioactive and by reducing the usage of electricity Ecoglo both saves clients’ money and helps the environment.

Operating from their Christchurch factory the Ecoglo team are able to respond quickly to the needs of the different facilities they market to. Each job is different, whether it be designing a new extrusion for the Burj Dubai or creating red anti-slip matting for Royal Navy ships. Many of Ecoglo’s customers are buying Ecoglo as much for its step edge contrast as for its ‘glow’. This internal contrast is created by incorporating an anti-slip mat into the product. “Ecoglo is visibly better, whatever the light conditions”, says Ecoglo Engineer, Mark Watson.

