

# Emergency Signs and Escape Routes



Photoluminescent  
Path Marking Systems  
For IBC/IFC, NFPA  
and High Performance  
Engineered Solutions

 **ecoglo**<sup>®</sup>  
VISIBLY BETTER

Email: [info@ecoglo.com](mailto:info@ecoglo.com)  
[www.ecoglo.com](http://www.ecoglo.com)

# Company Profile

When Ecoglo was formed in 1997 it focused on a gap in market for lighting solutions that used minimal or no electricity. Ecoglo's research had looked at visibility in emergency conditions and crowd behaviour before getting its first opportunity with the Sydney Olympic arena.

The Sydney Olympics were the first Olympics to actively integrate sustainable building solutions into it's facilities and Ecoglo was able to develop an aisle lighting system for the arena.

Since 2000 research and development has focused on refining Ecoglo's patented manufacturing process to produce products that have superior durability, rapid charging and predictable visibility.

This development programme has lead to the design and manufacture of a range of Emergency Signs and Escape Route Products to meet the highest standards worldwide.

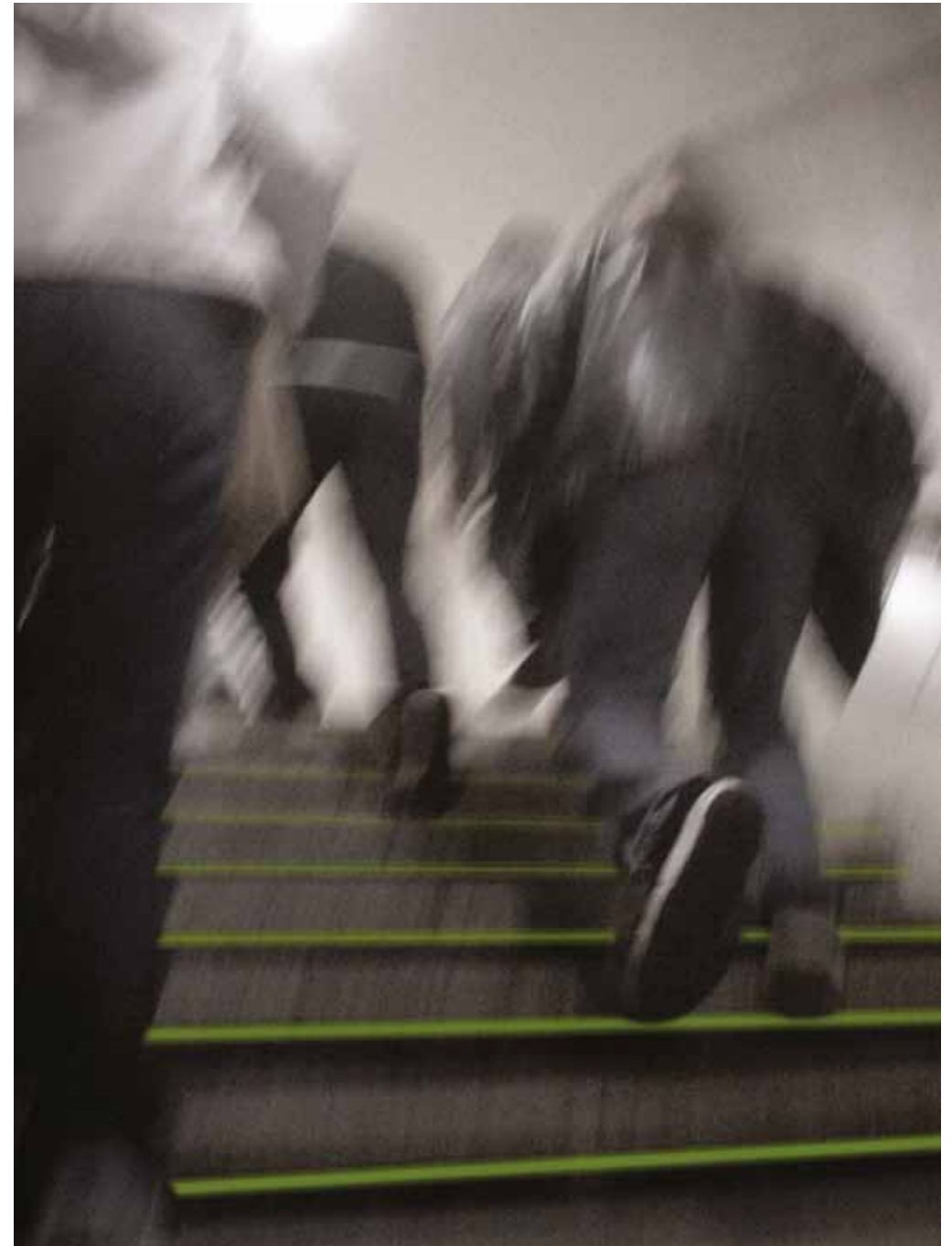
Ecoglo has the expertise and experience to design and install innovative, sustainable and cost effective solutions that comply with emergency exit sign and emergency lighting requirements.

Ecoglo's products have been used worldwide in facilities as varied as the Melbourne Cricket Ground, New York's 'Jazz at the Lincoln Center, Singapore Supreme Court, Toronto's Eaton Centre, London's Bond St Underground Station and Dubai's 160 floor Burj Khalifa.

By harvesting sunlight or recycling the existing light in a building, Ecoglo products provide sustainable and cost effective building solutions. The solutions are failsafe, operate immediately and do not require ongoing maintenance.

There are many ways to become more environmentally friendly and one of these is to endeavour, wherever possible, to use new technology products that are more sustainable.

As well as reducing electricity usage, Ecoglo products incorporate recycled aluminium, are non toxic and non radioactive. Being very durable they will last the life of the facility and can then be readily recycled.



# Emergency Exit Signs



## Pictogram

Exit straight on from here

16 metre maximum

viewing distance

S20-RM1616-16m 162mm x 162mm



## Pictogram Exit straight on from here

24 metre maximum viewing distance

S20-RM2323-24m 230mm x 230mm



## Pictogram

Exit straight on from here

**Maximum Viewing Distance:**

16 metres

**Product No:** S20-RM2916-16m

**Size** 290mm x 162mm

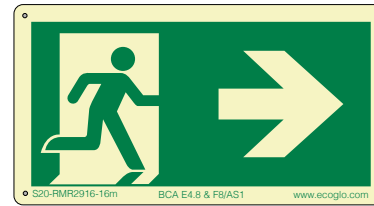


## Pictogram Exit straight on from here

**Maximum Viewing Distance:** 24 metres

**Product No:** S20-RM4223-24m

**Size** 420mm x 230mm



## Pictogram Right

Exit to right from here

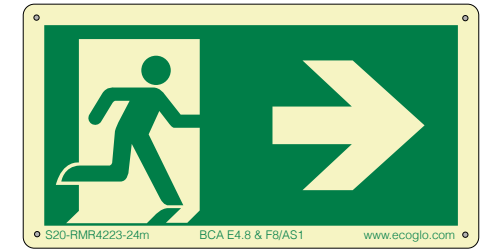
**Maximum Viewing Distance:**

16 metres

**Product No:** S20-RMR2916-16m

**Double Sided:** DSS20-RMD2916-16m

**Size** 290mm x 162mm



## Pictogram Right

Exit to right from here

**Maximum Viewing Distance:** 24 metres

**Product No:** S20-RMR4223-24m

**Double Sided:** DSS20-RMD4223-24m

**Size** 420mm x 230mm



## Pictogram Left

Exit to left from here

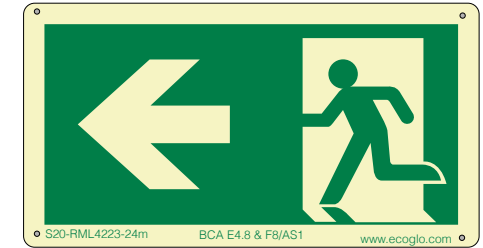
**Maximum Viewing Distance:**

16 metres

**Product No:** S20-RML2916-16m

**Double Sided:** DSS20-RMD2916-16m

**Size** 290mm x 162mm



## Pictogram Left

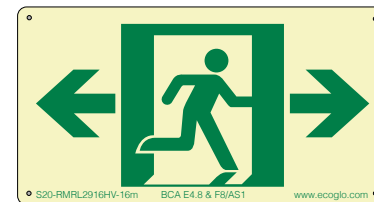
Exit to left from here

**Maximum Viewing Distance:** 24 metres

**Product No:** S20-RML4223-24m

**Double Sided:** DSS20-RMD4223-24m

**Size** 420mm x 230mm



## Pictogram Double Arrow Hi Vis

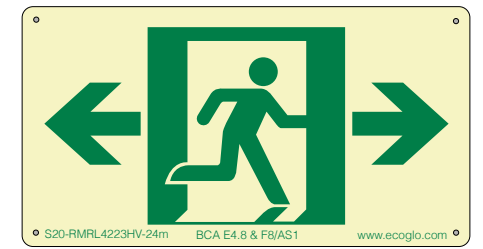
Exit to right and left from here

**Maximum Viewing Distance:** 16 metres

**Product No:** S20-RMRL2916HV-16m

**Double Sided:** DSS20-RMRL2916HV-16m

**Size** 290mm x 162mm



## Pictogram Double Arrow Hi Vis

Exit to right and left from here

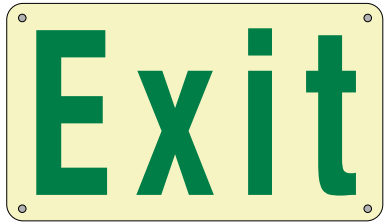
**Maximum Viewing Distance:** 24 metres

**Product No:** S20-RMRL4223HV-24m

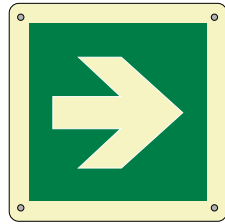
**Double Sided:** DSS20-RMRL4223HV-24m

**Size** 420mm x 230mm

# Ancillary Signs



**Exit** Not specified under Deemed-to-Satisfy Provisions  
**Product No:** S20-EX2916  
**Size:** 290mm x 162mm



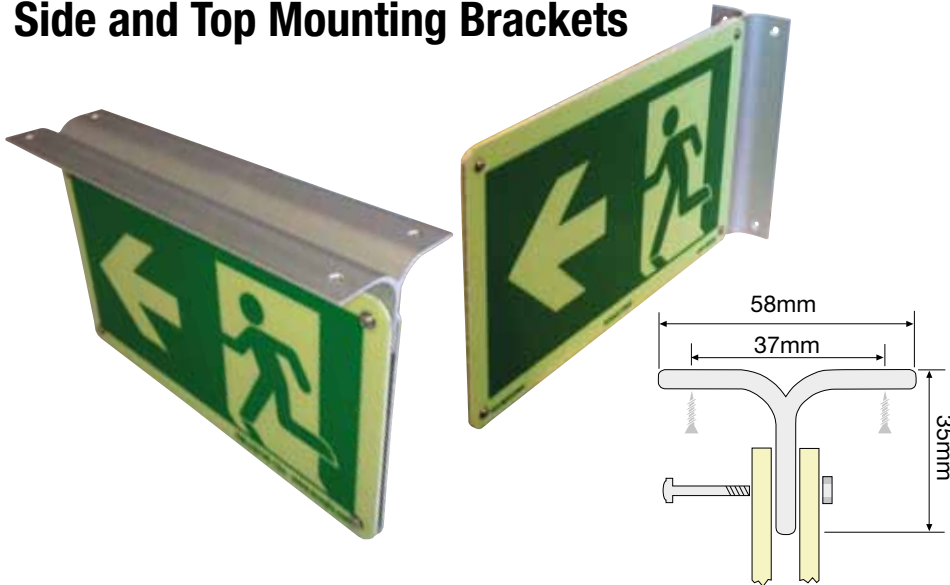
**Arrow** Not specified under Deemed-to-Satisfy Provisions  
**Product No:** S20-AR2323  
**Size:** 230mm x 230mm



**Arrow** Not specified under Deemed-to-Satisfy Provisions  
**Product No:** S20-AR1616  
**Size:** 162mm x 162mm

# Mounting Brackets

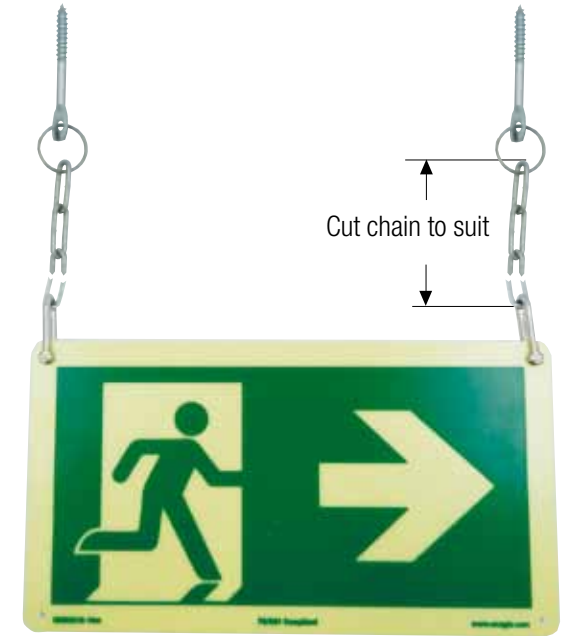
## Side and Top Mounting Brackets



# Mounting Chain

## Chain Suspension for Signs

Chain available in 1 metre, 2 metre and 3 metre lengths



# Adhesives

## Adhesive for Escape Route Products

Pricing available on request

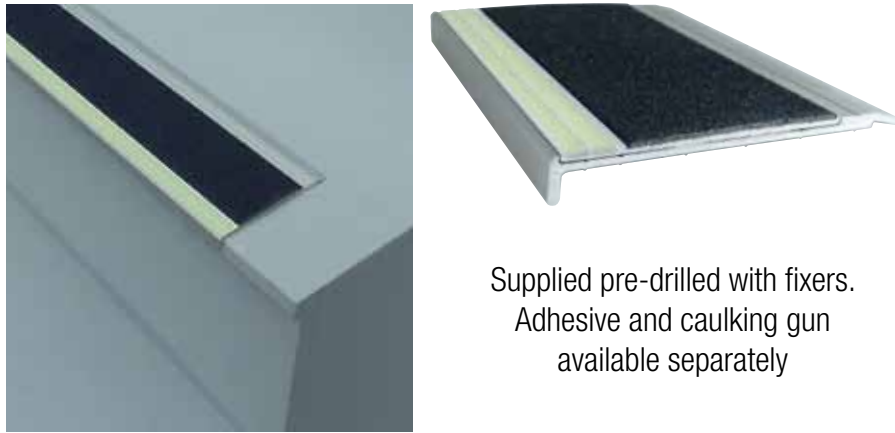


Bostik Seal'n'Flex  
FC 600ml  
BSKSNF-600ml

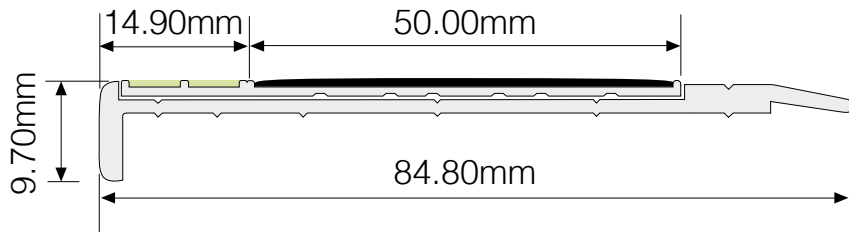
# Escape Route Products to meet Emergency Lighting Requirements

## F14-175 Step Nosing 85mm x 10mm

Available in 1000mm lengths 600mm to 1500mm in 100mm increments



Supplied pre-drilled with fixers.  
Adhesive and caulking gun  
available separately



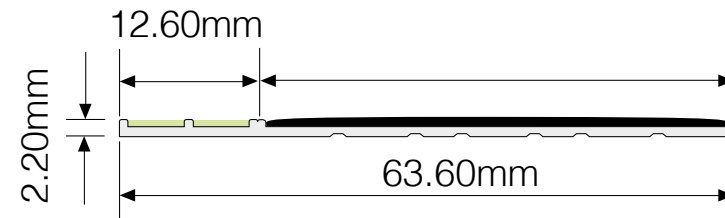
## E14-075 Step Edge Contrast 64mm

Available in 1000mm lengths 600mm to 1500mm in 100mm increments



Adhesive and  
caulking gun  
available separately

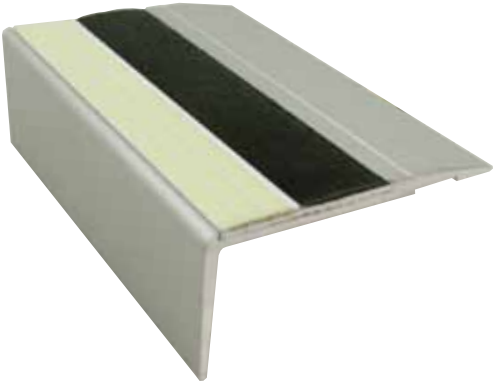
**E14-075** Standard for glue fixing  
**E14-075P** Punched for screw fixing



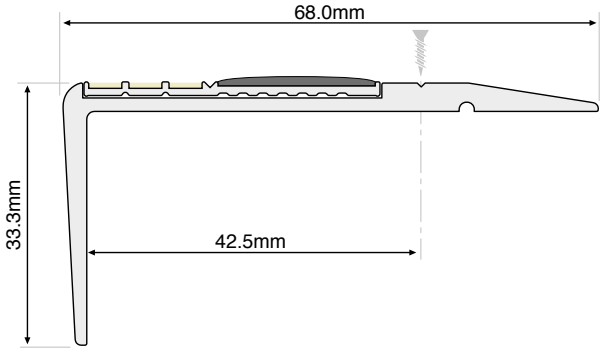
# Escape Route Products to meet Emergency Lighting Requirements

## F4-171 Step Nosing 68mm x 33mm

Available in standard lengths from 600mm to 1500mm in 100mm increments



Supplied pre-drilled with fixers.  
Adhesive and caulking gun  
available separately

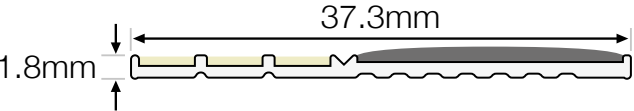


## E2-071 Step Edge Contrast 37mm

Available in standard lengths from 600mm to 1500mm in 100mm increments



E2-071 Standard for glue fixing  
E2-071P punched for screw fixing



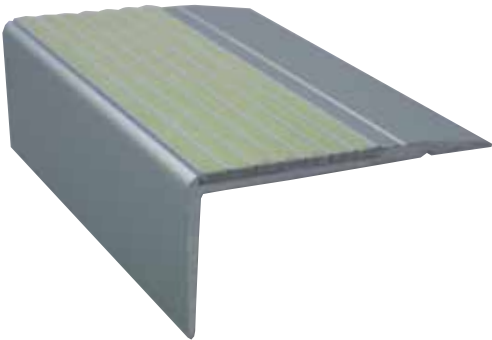
Adhesive and  
caulking gun  
available separately



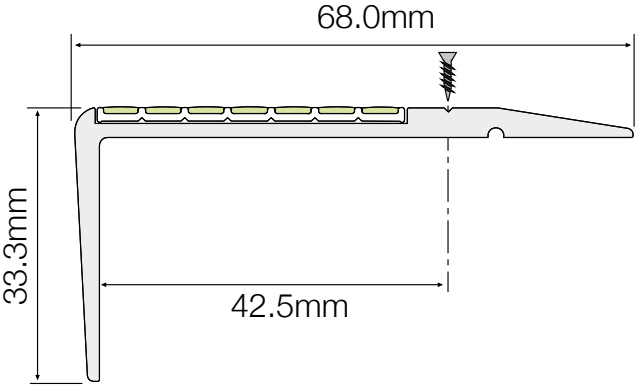
# Escape Route Products to meet Emergency Lighting Requirements

## F4-G111 Step Nosing 68mm x 33mm

Available in standard lengths from 600mm to 1500mm in 100mm increments

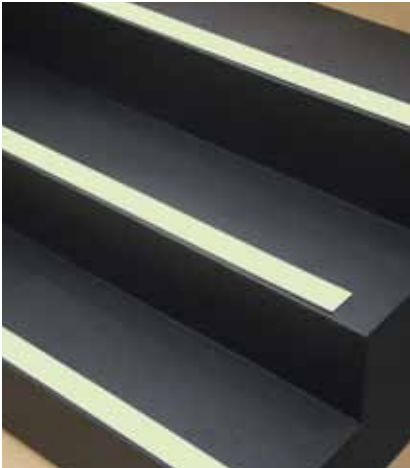


Supplied pre-drilled with fixers.  
Adhesive and caulking gun  
available separately

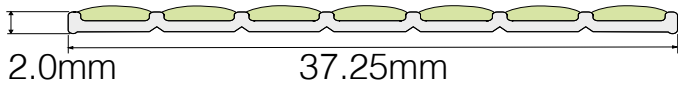


## G8-011 Step Edge Composite 37mm

Available in standard lengths from 600mm to 1500mm in 100mm increments



**G8-011** Standard for glue fixing  
**G8-011P** Punched for screw fixing

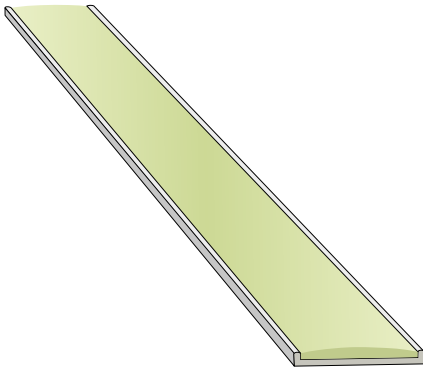
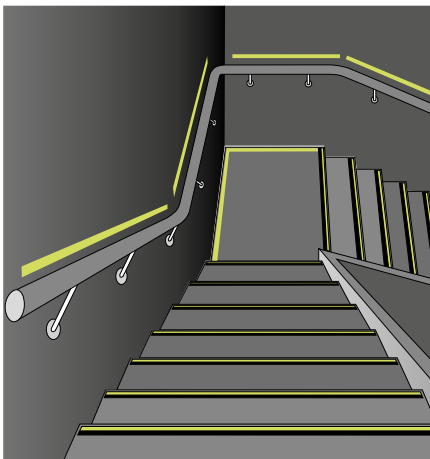


Adhesive and  
caulking gun  
available separately

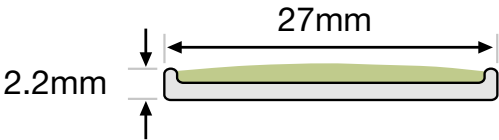
# Escape Route Products to meet Emergency Lighting Requirements

## MS-26 Handrail Wall Strip 26mm

Available in 1000mm lengths



MS-26T-1000 Release tape pre-fitted

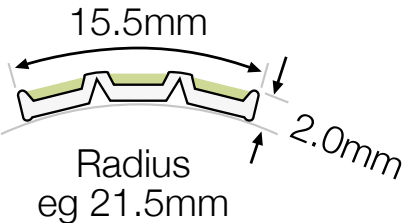


## H3-001 Handrail Strip 16mm

Available in 1000mm lengths



H3-001T-1000 Release tape pre-fitted





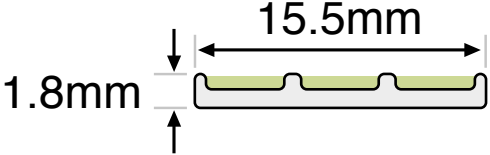
# Escape Route Products to meet Emergency Lighting Requirements

## G3-001 Guidance Strip 16mm

Available in 1000mm lengths



G3-001-1000 Standard for glue fixing  
G3-001P-1000 Punched for screw fixing  
G3-001T-1000 Release tape pre-fitted

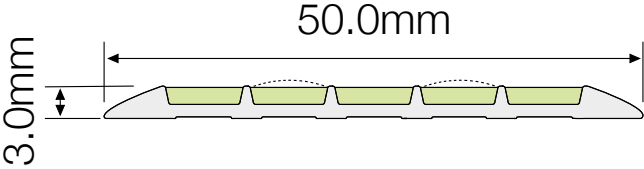


## G7-100 Solaris Path Marker

Available in 100mm lengths



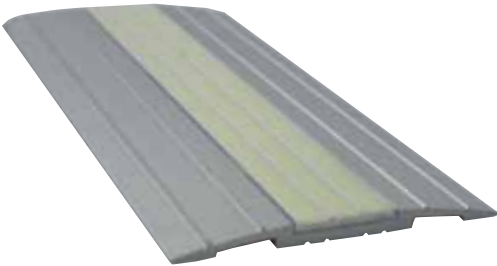
G7-100 Standard for glue fixing  
G7P-100 Punched for screw fixing  
G7T-100 Release tape pre-fitted



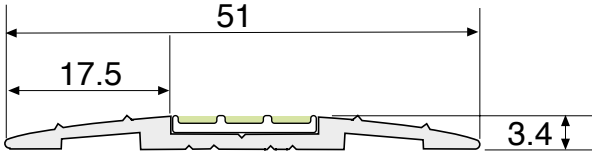
# Escape Route Products to meet Emergency Lighting Requirements

## T5-101 Path Marker

Available in 1000mm lengths

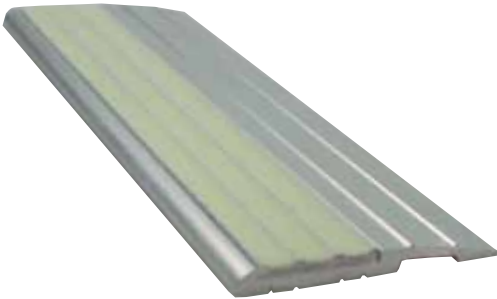
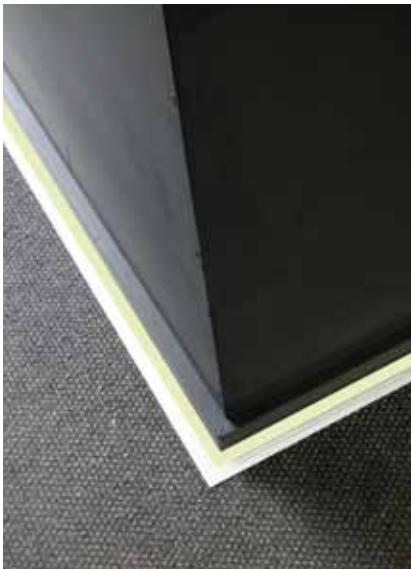


T5-101-1000 Standard for glue fixing  
T5-101P-1000 Punched for screw fixing

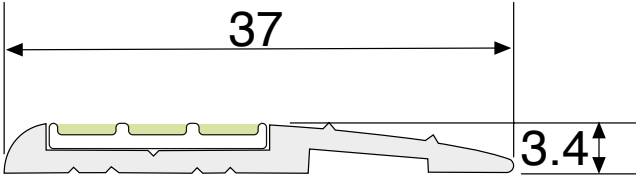


## T6-101 Path Marker

Available in 1000mm lengths



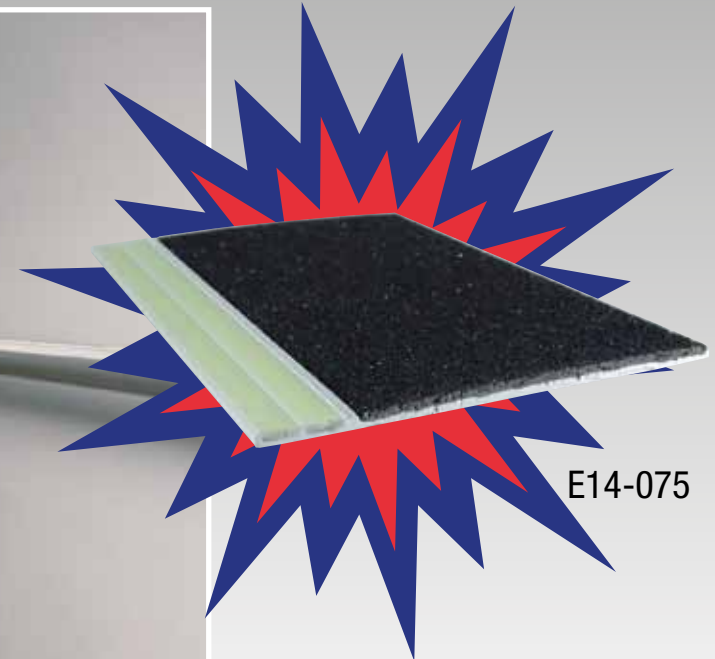
T6-101-1000 Standard for glue fixing  
T6-101P-1000 Punched for screw fixing



# 2 PROBLEMS ONE SOLUTION

## Attention Designers and Project Managers

Ecoglo has the product  
to solve your  
**EMERGENCY LIGHTING  
AND ACCESSIBILITY**  
problems on steps  
and stairways.



E14-075

 **ecoglo**<sup>®</sup>  
VISIBLY BETTER

Email: [info@ecoglo.com](mailto:info@ecoglo.com)  
[www.ecoglo.com](http://www.ecoglo.com)